

City of Chico Animal Services

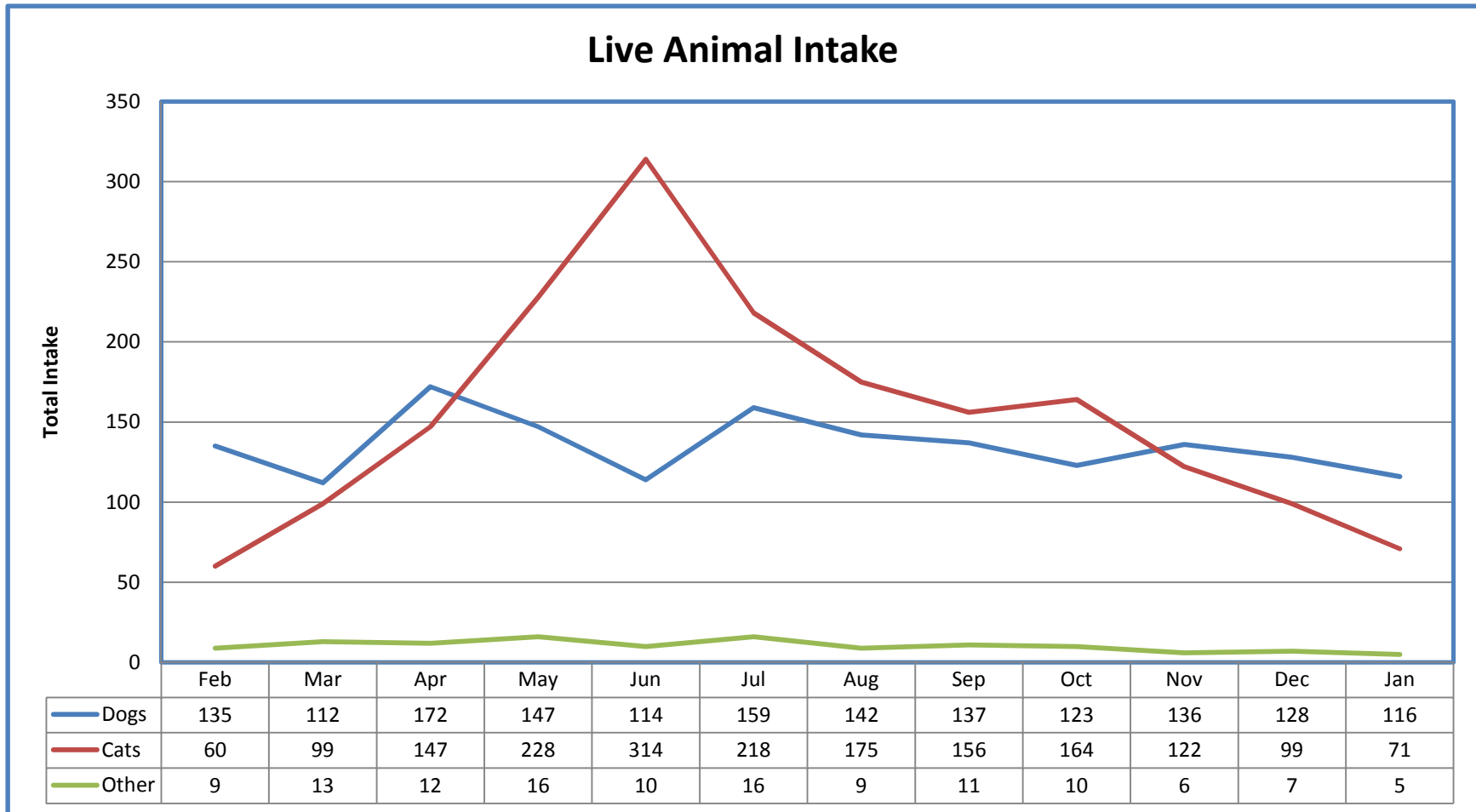
First Year of Operation

Feb 2012 – Jan 2013

Explanation of Reporting Periods

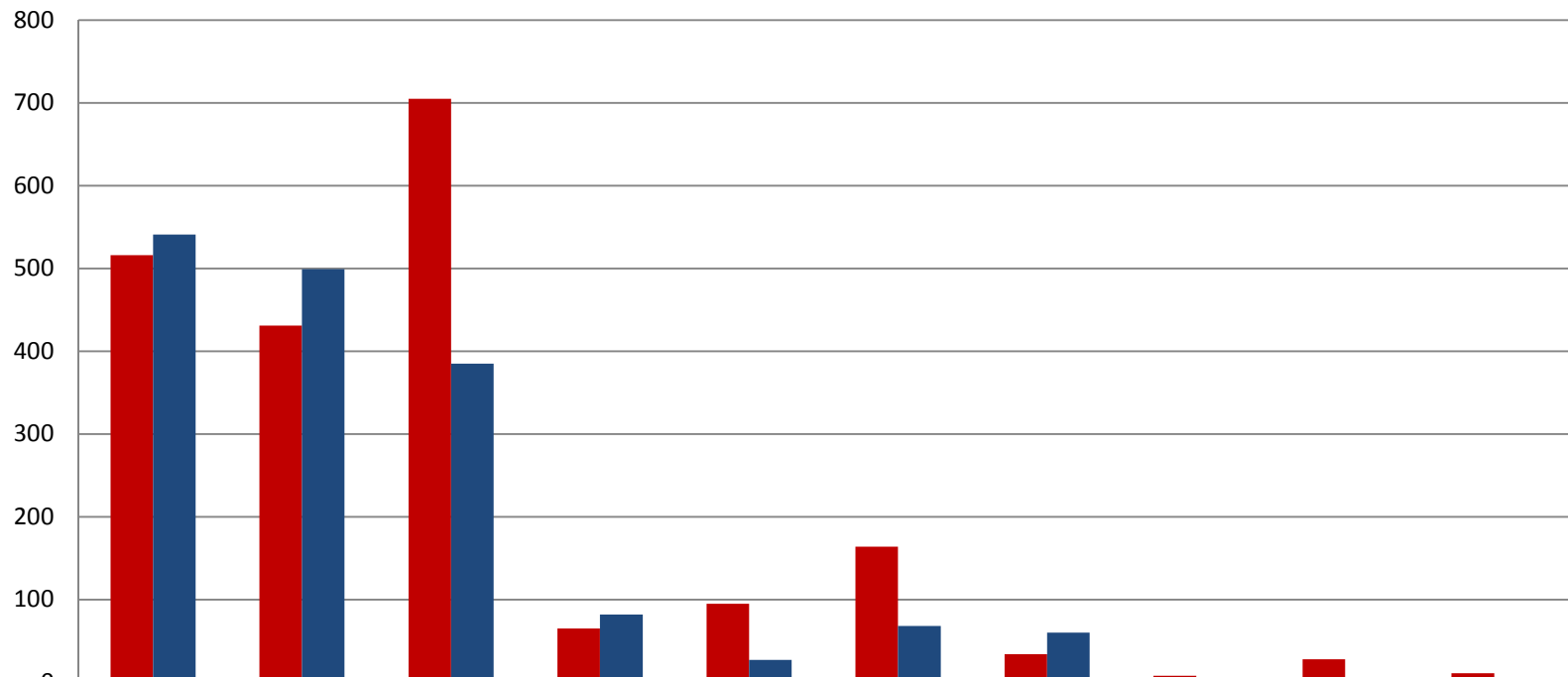
- The City resumed operations of the city animal shelter on February first of 2012. The following statistics and charts reflect the first year of City operation, from February 2012 through January 2013 (labeled “2012”). Data comparisons are for the same time period the previous year, from February 2011 through January 2012 (labeled “2011”).

A total of 1,620 dogs, 1,853 cats, and 124 other live animals were brought to the shelter during the reporting period, with a distinct spike in the numbers of cats occurring during the summer months:



The following charts show the number of animals entering the shelter by source. The number of animals brought in by animal control increased for all categories. The number of dogs and other surrendered animals increased, while the number of cat surrendered decreased slightly.

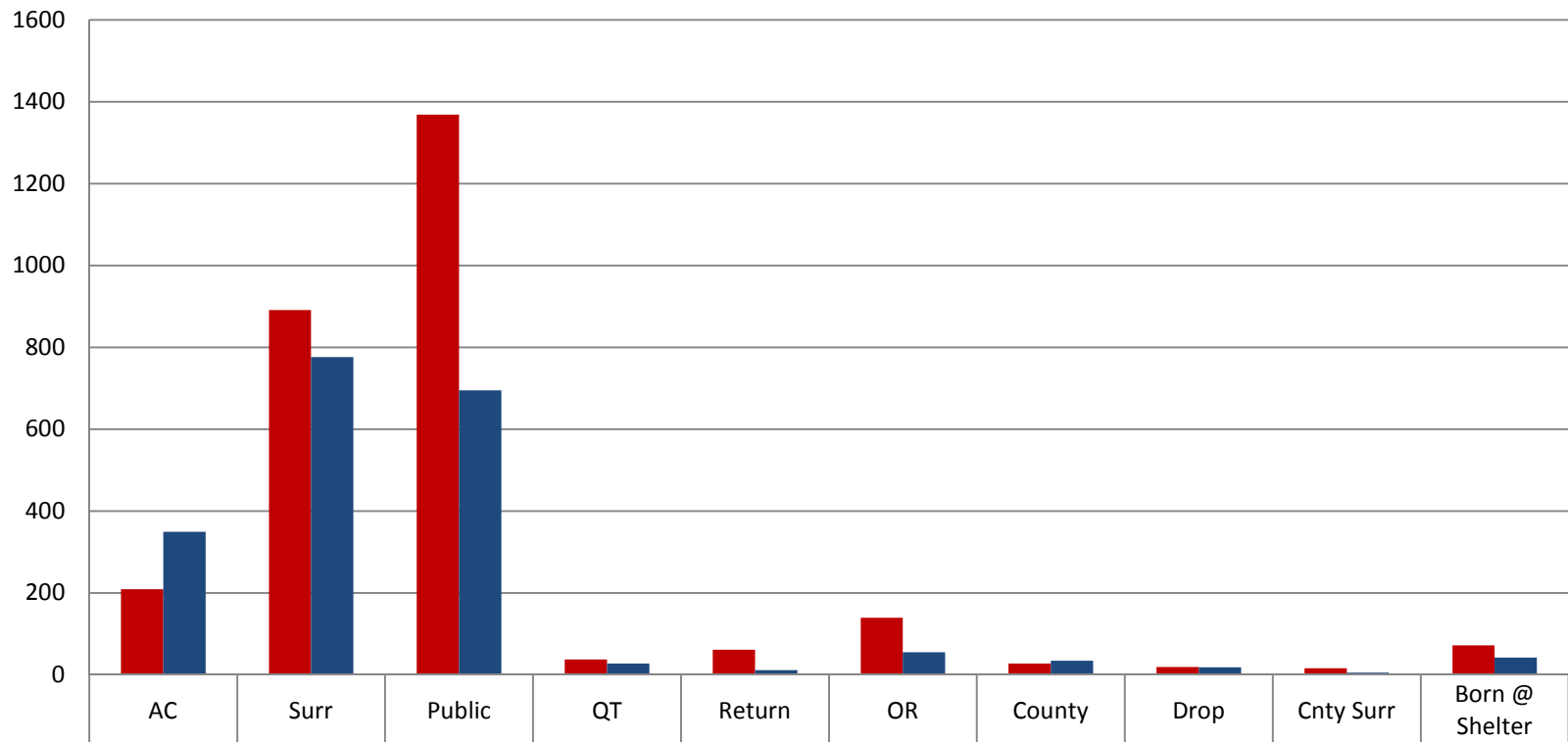
Dog Intake by Source 2012



	AC	Surr	Public	QT	Return	OR	County	Drop	Cnty Surr	Born @ Shelter
Dogs 2011	516	431	705	65	95	164	34	8	28	11
Dogs 2012	541	499	385	82	27	68	60	5	1	0

There was a significant decrease in the number of strays brought in by citizens. This may be due to the City's policy of only taking in animals from within the incorporated portion of the City.

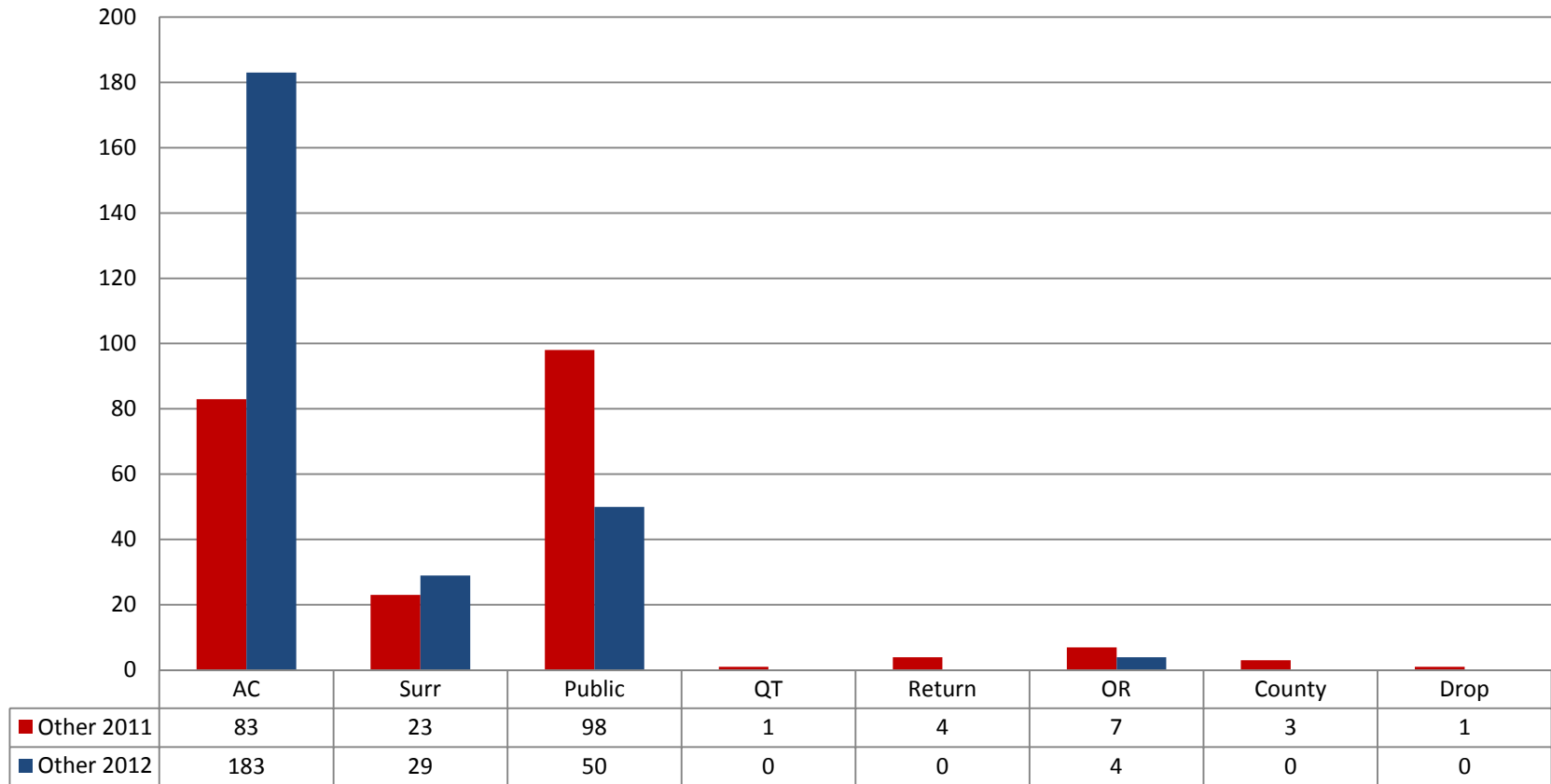
Cat Intake by Source 2012



■ Cats 2011	209	891	1368	37	61	139	27	19	16	72
■ Cats 2012	349	776	695	27	11	55	34	18	5	42

“Other” includes wildlife like squirrels and raccoons, and domestic animals other than dogs and cats like rabbits, snakes, and chickens.

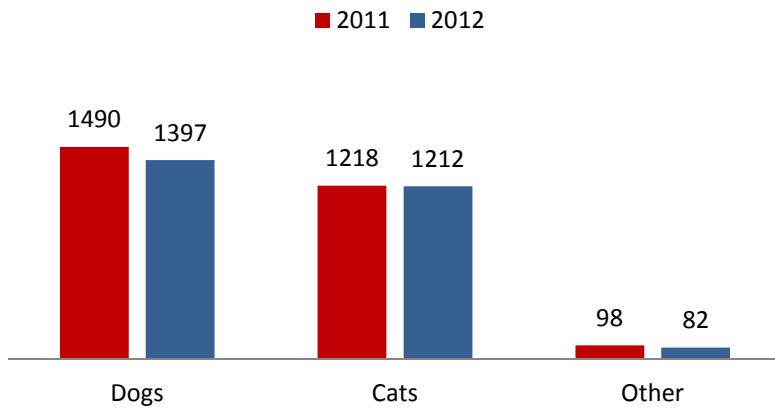
Other Intake by Source 2012



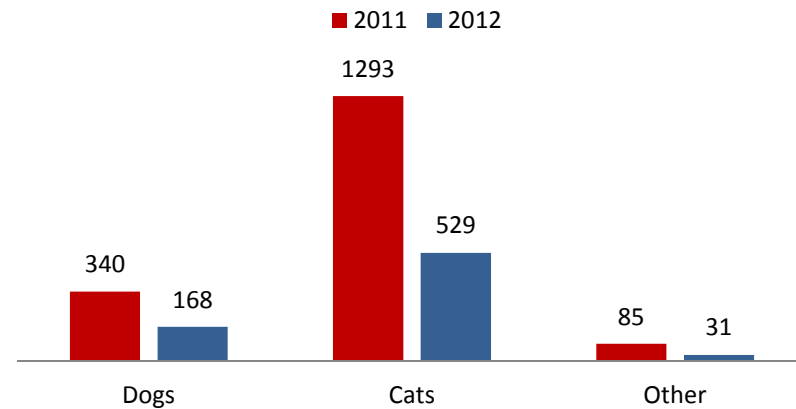
Sources: **AC** – Animal Control, **Surr** – surrendered by owner, **Public** – stray brought in by citizen, **QT** – quarantine, **Return** – returned by adopter, **OR** – owner request euthanasia, **County** – county stray, **Drop** – left at shelter, **Cnty Surr** – surrendered by owner (county resident)

Outcomes for the First Year of Operation*

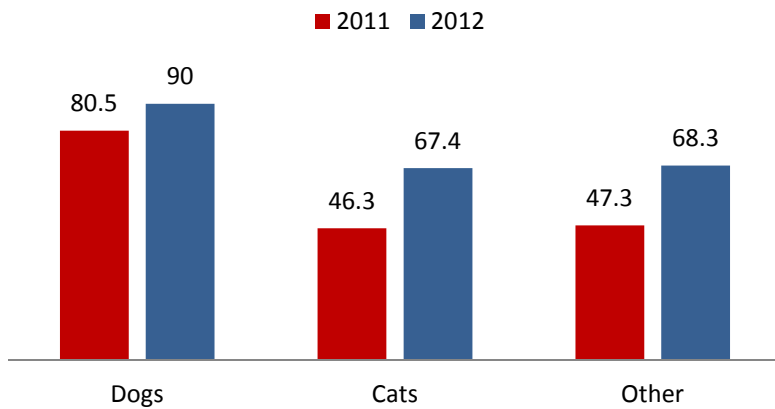
Live Release Totals



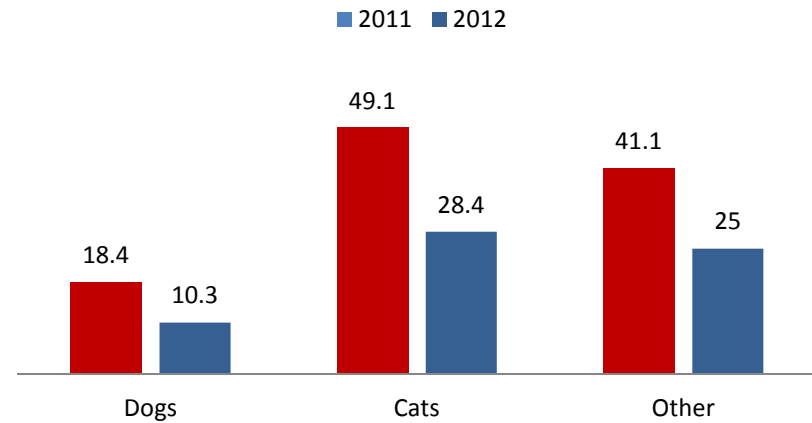
Euthanasia Totals



Live Release as Percent of Intake



Euthanasia as percent of Intake



*Feb 2012 – Jan 2013

Intake and Release Feb 2012 - Jan 2013 (First year of operation)									
<u>INTAKE:</u>	Dogs	%		Cats	%			Other*	%
Animal Control	540	32.4	Animal Control	349	17.3	Animal Control		184	68.9
Public Strays	385	23.1	Public Strays	695	34.5	Public Strays		50	18.7
Surrenders	499	29.9	Surrenders	776	38.6	Surrenders		29	10.9
Quarantines	82	4.9	Quarantines	27	1.3	Quarantines		0	0.0
Returned	27	1.6	Returned	11	0.5	Returned		0	0.0
Owner Requests	68	4.2	Owner Requests	55	2.7	Owner Requests		4	1.5
County	60	3.6	County	34	1.7	County		0	0.0
Dropped	5	0.3	Dropped	18	0.9	Dropped		0	0.0
County Surrender	1	0.1	County Surrender	5	0.2	County Surrender		0	0.0
Born at Shelter	0	0.0	Born at Shelter	42	2.1	Born at Shelter		0	0.0
	1667			2012				267	
Carry (BHS)	14			10					
DOA	47		DOA	159		DOA		142	
Total Live	1634		Total Live	1863		Total Live		125	
<u>OUTCOMES:</u>	Dogs			Cats				Other*	
RTO	683		RTO	78		RTO		6	
Transfer to BHS	571		Transfer to BHS	801		Transfer to BHS		22	
Euthanized	172		Euthanized	526		Euthanized		31	
Transfer to Rescue	38		Transfer to Rescue	144		Transfer to Rescue		18	
Tranferred	50		Transferred	20		Transferred		0	
Adopted	48		Adopted	153		Adopted		26	
RTF	8		RTF	8		RTF		0	
Died	2		Died	47		Died		4	
Escaped	5		Escaped	2		Escaped		0	
Rehab	0		Unknown	3		Rehab		8	
	1577			1782				115	
Remain	57			81				10	
4/19/2013	*Other includes wildlife and domestic pets other than dogs and cats.								